

Kodak

gets you



TAKE CONTROL OF YOUR COLOR AND BITONAL SCANNING.

KODAK Capture Software is an easy-to-install, easy-to-use production scanning application for electronic capture of documents from KODAK scanners. It's an ideal front-end capture application to content and document management applications; imaging, forms processing and workflow applications; and as a standalone application. It manages scanning, indexing and batching – simplex and duplex, color and bitonal. Batches can be easily exported to many popular applications, such as scan-to-Web, magnetic storage or CD authoring, complete with associated index data. Simply put, Capture Software allows you to fully utilize your KODAK Scanner's capabilities for maximum productivity.

HIGH-SPEED MULTI-IMAGE VIEWER

Capture Software's multi-image display lets you visualize a multi-page document and verify image quality during scanning. With it, you can see up to eight images at a time. Or use the fast image-fit mode for dynamic zooming and show every image as large as possible in each window. Capture Software's icon-based toolbar, context-sensitive menus, and online tool tips reduce the need for training and memorization.

DRAMATICALLY REDUCE PRESORTING. Simultaneous bitonal and color scanning not only lets you capture more visual information, it virtually eliminates the need to separate documents.

And use of the Auto Blank Page Deletion feature during scanning or post-processing means there's no need to presort batches into single- and double-sided originals.

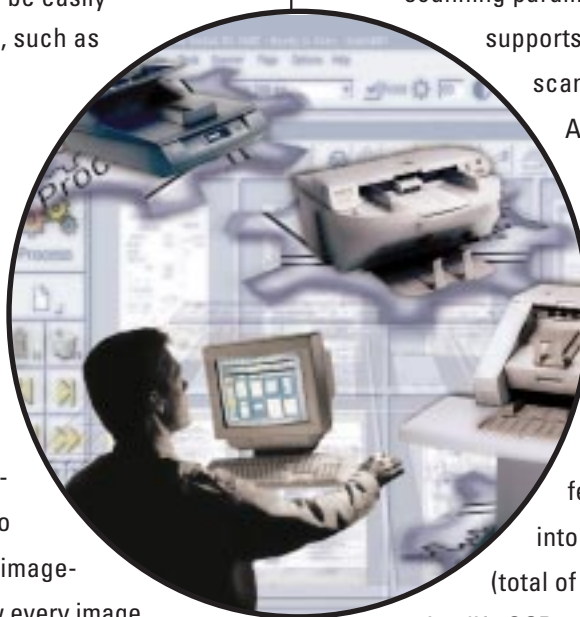
QUALITY IMAGES WITH MINIMAL OR NO ADJUSTMENTS.

On-the-fly Deskew and Autocropping features let you eliminate black borders around bitonal or color mixed-size originals at the full rated speed of your scanner – without changing any scanning parameters. Auto Rotation (90°, 180°, 270°)

supports landscape scanning, even on color scans, to maximize scanner throughput.

An array of image manipulation and editing tools makes it easy to rescan, rotate, reorder and delete pages.

What's more, the 'Merge Front and Rear Feature' combines both sides of a page into a single image and makes it immediately visible on the screen. The Split Front And Rear feature divides very long documents into smaller images, either two per side (total of four) or three per side (total of six), to simplify OCR processing of forms. So, for example, you can automatically convert one A3 page into two A4 pages.

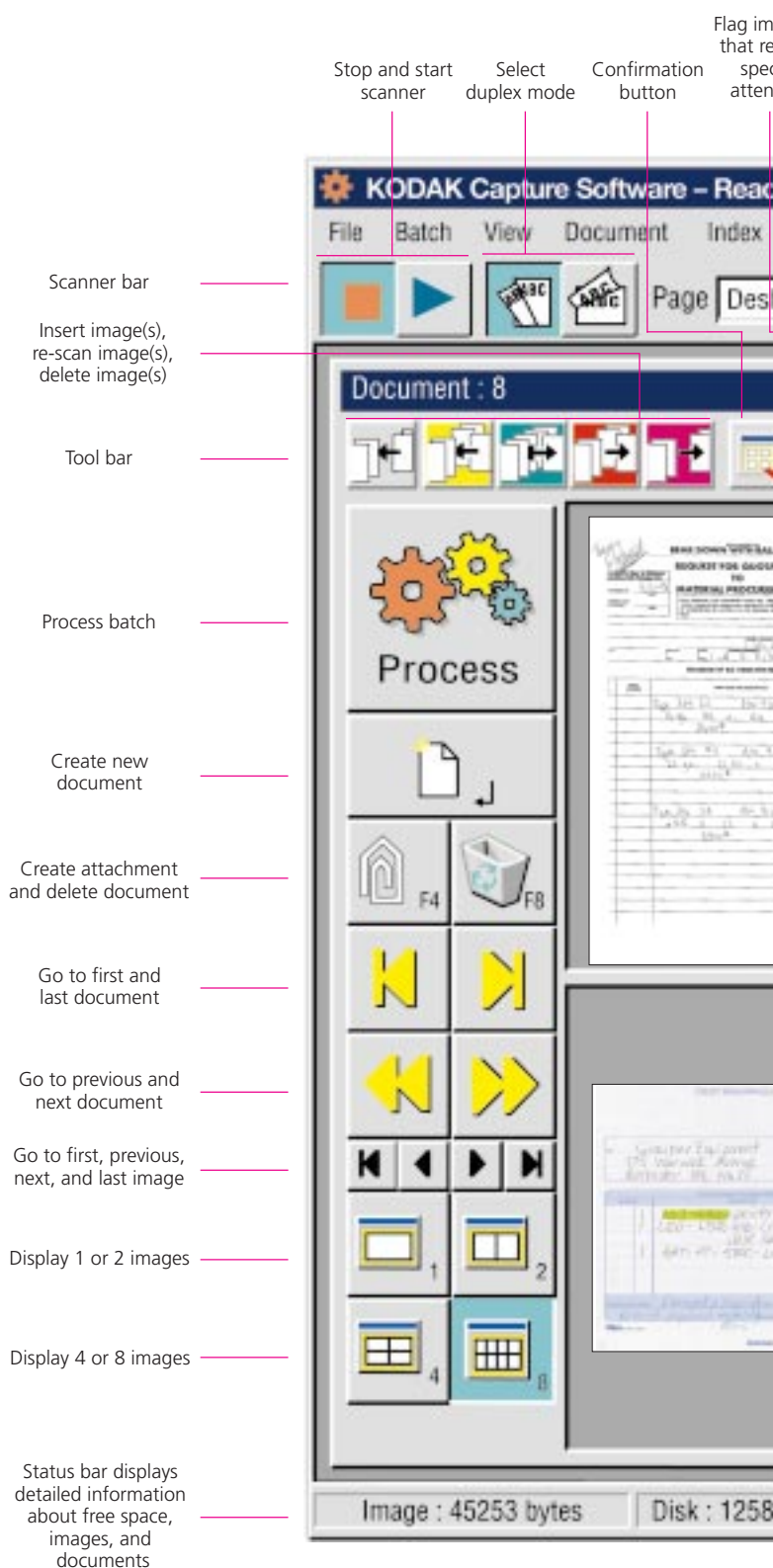


MAXIMIZE YOUR SCANNING PRODUCTIVITY WITH THE EASY

KODAK Capture Software is designed for speed, accuracy, and ease of use. It enables optimum scanner throughput and maximum operator productivity. A high-speed, multi-page display presents images deskewed and autocropped for legibility. A complete set of icon-based tools is available at a mouse click to simplify scanning management.

In addition to the features illustrated to the right, Capture Software contains an array of tools for greater scanning productivity:

- Multi-image display with dynamic zooming for fast and easy verification
- Autocrop removes black borders and Deskew straightens images on the fly for color and bitonal images
- Auto Rotation supports landscape scanning to maximize throughput
- Auto Blank Page Deletion during scanning or post-processing reduces the need to presort
- Simultaneous color and bitonal output from color scanners
- Image manipulation and editing lets you rescan, rotate, reorder and delete pages
- Merge and Split features provide ease and flexibility to scan small and large forms and documents
- Recognition of 13 different types of bar codes (including the PDF 417 high-density bar code) on both front and rear images
- On-the-fly bar code and patch code recognition enables powerful indexing and batching of color and bitonal images
- Enhanced indexing options to set special default values, split a bar code value over several fields, and validation through mask formulas and check digit exits
- Continuous incrementing of document numbers across batches or incrementing of image numbers across documents
- Index files at the batch and document level
- Automatic batch and document separation input from patch, bar codes and blank page
- Multiple native scan structures (e.g., single-page TIFF)
- Web publishing via PDF output
- Array of batch output formats for integrating scanning into content, management, document management, workflow and imaging applications
- A special batch output format for CD authoring with full indexing information
- User profiles and profile groups to control access to specific applications and Capture Software features and capabilities



Y-TO-USE INTERFACE DESIGNED FOR SPEED AND ACCURACY

Image(s)
require
special
action

Pre-defined page
templates load
a full set of scan
parameters with one
mouse click

Rotate 90°
right, 180°
and 90° left

Magnifying glass
and scroll tool

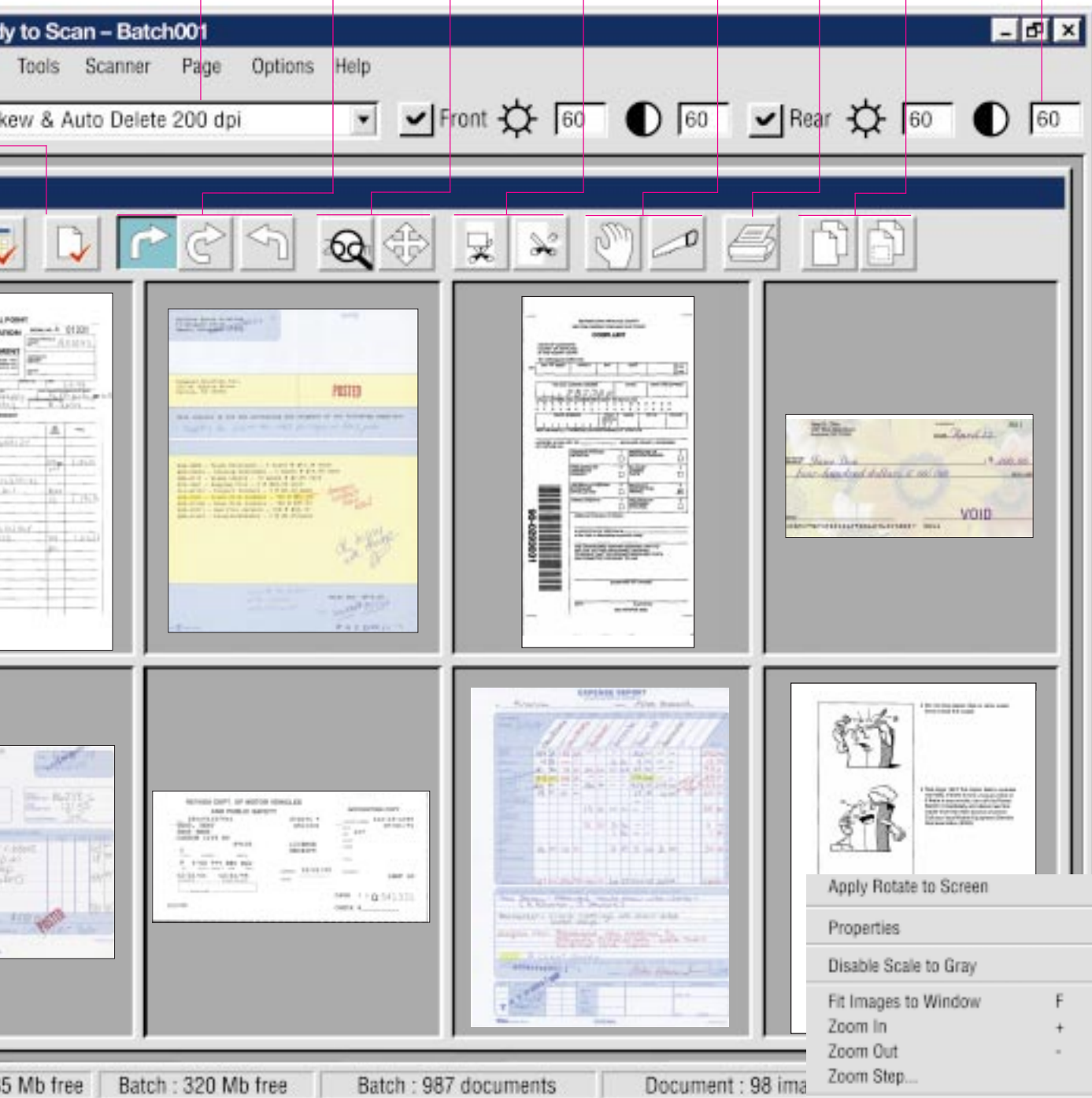
Blank part of an
image and crop
part of an image

Move image
and split
document into
two documents

Print
image(s)

Copy image
and copy par-
tial image

Direct access to
contrast and
threshold settings
for front and rear



Right-clicking on an object provides a context-sensitive menu that gives you immediate access to functions

KODAK Capture Software

ELIMINATE STEPS WITH FAST, FLEXIBLE INDEXING.

A choice of indexing options allows you to configure indexing according to the requirements of your application.

You can capture index data from bar codes while scanning, or key enter data from images or original documents. Automatic data capture from bar codes, even bar codes from color images, drastically reduces the need to perform key entry from scanned images or originals. When key entry is necessary, zoom zones make it easy. Just click in an index field and zoom in on the portion of the image (front or rear) you want to display. Then Capture Software stores the image position and zoom ratio for the active index field.

Indexing and image/index verification can also be done on (a) separate Capture Software workstation(s), thereby increasing your overall scanner throughput and capture productivity.

The index can be sent to your imaging application and/or written directly to a CD, complete with a viewer and retrieval application. The resulting self-contained "image system on a disk" can be stored, distributed, or easily duplicated as an alternative for traditional micro-publishing applications.

CHOOSE THE BATCH OUTPUT FORMAT THAT WORKS BEST FOR YOU.

Capture Software features a range of batch output formats for compatibility with popular imaging and document management systems. Additional batch output formats are being added on an ongoing basis. A batch output API is also available for customized output formats. For a list of all available batch output formats, or to download any new batch output formats, visit

kodak.com/go/capturesoftware

A POWERFUL APPLICATION FOR THROUGH-PUT PERFORMANCE.

Capture Software is a 32-bit program that takes full advantage of the superior performance of fast single- and multi-processor PCs under the MICROSOFT WINDOWS NT operating system. Capture Software can also be used under the WINDOWS 95, 98, and 2000 operating systems.

CAPTURE SOFTWARE SUPPORT FOR YOUR SCANNER MODEL.

There is a KODAK Capture Software product available to complement the capabilities of specific KODAK Scanner models:

- Scanners 1500 and 2500
- Scanners 3500, 3510 and 3520
- Color Scanners 3590C and 4500
- Scanner 5500
- Scanners 7500 and 7520
- Scanners 9500 and 9520
- Scanner/Microimager 990
- i800 Series Scanners

TO DOWNLOAD a free demonstration version of Capture Software, visit

kodak.com/go/capturesoftware



We're here for you.
Kodak Service & Support

For more information about this or other Kodak products or services, please contact your local Kodak office or an reseller of Kodak products.

United Kingdom, Scandinavia

Phone: +44 1 442 845213

Fax: +44 1 442 844273

Austria, Germany & Switzerland

Phone: +49 711 406 3411

Fax: +49 711 406 5166

Eastern Europe, Middle East & Africa

Phone: +36 1 3879117 (Ext. 131)

Fax: +36 1 3879113

France, Spain, Portugal

Phone: +33 1 4001 4706

Fax: +33 1 4001 3981

Italy

Phone: +39 02 660 28 338

Fax: +39 02 660 28 358

The Netherlands, Belgium, Luxembourg

Phone: +31 347 363 600

Fax: +31 347 363 606

For any Service related issues, please kindly contact our European Service Support Center

Phone: +44 1442 845222

www.kodak.com/go/docimaging

